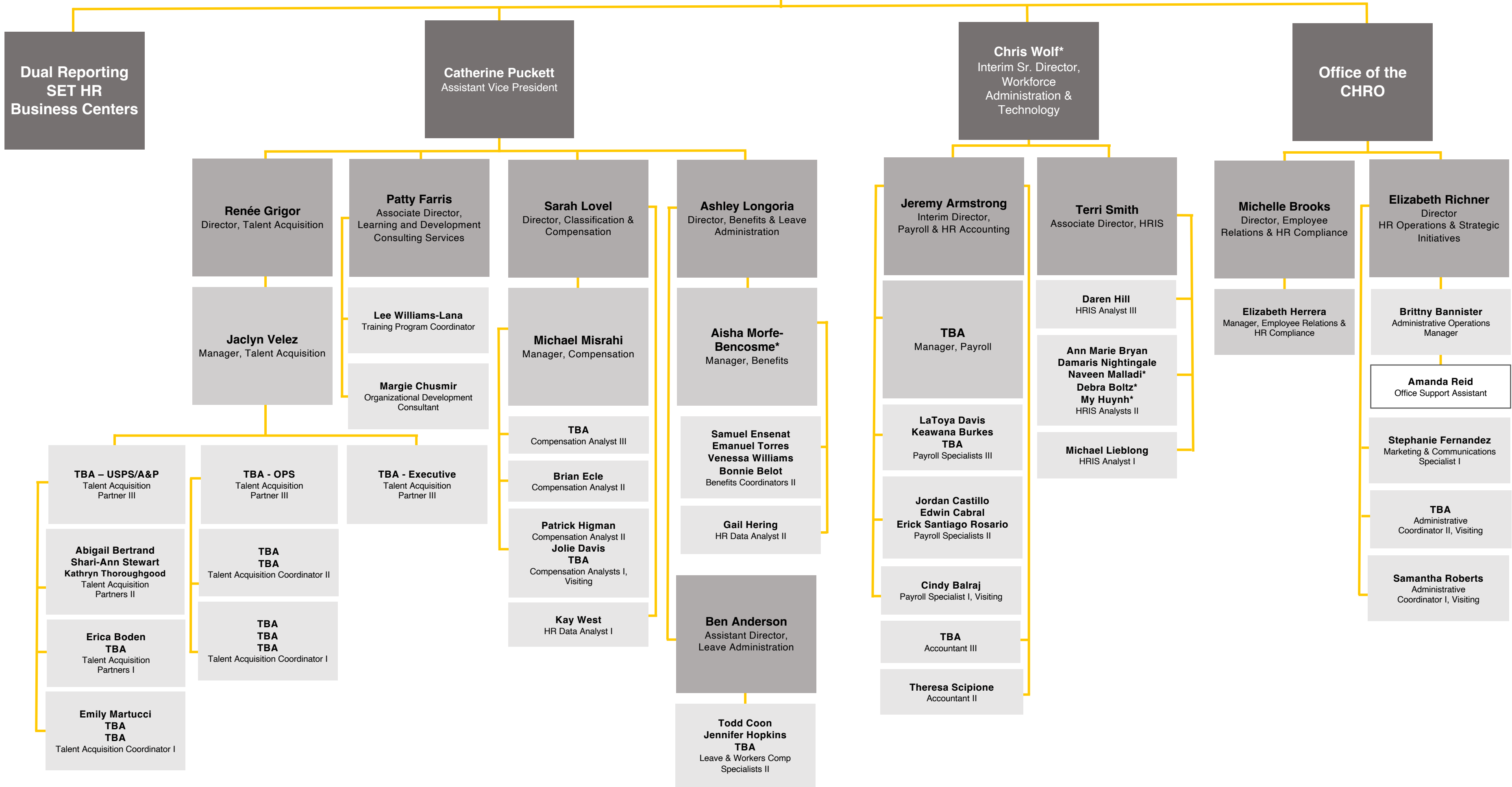




# Maureen Binder Associate Vice President & Chief Human Resources Officer



**Knight Vision**

<b>Becky Moulton</b> HCM Workstream Lead	<b>Isha Guerrero-Londeree</b> Payroll and Accounting Lead
<b>Aisha Morfe-Bencosme</b> Benefits Lead	<b>Molly Myers</b> HCM Core and Compensation Lead
<b>Jamie Makowski</b> Talent/Recruiting/ Onboarding Lead	<b>Aubrey Jayanama</b> Learning Lead
<b>Monica Alvarado-Rodriguez</b> Absence and Timekeeping Lead	



**Maureen Binder**  
Associate Vice President & Chief Human Resources Officer

Dual Reporting  
SET HR  
Business Centers

